

# MEGAFILE PARTITIONING ADDENDUM

The Atari MEGAFILE hard disk is already partitioned. The MEGAFILE 60 is divided into four partitions of 15 megabytes each.

Partitioning a hard disk is a process that divides the disk into sections. Setting a partition size tells the hard drive how much storage capacity to assign to each partition. You can use the factory-set partition capacities or change the storage capacity of each partition to suit your file organization needs.

Partitioning divides your physical hard disk into data storage areas called logical drives. Each logical drive is assigned its own drive letter when you install the logical drives from GEM Desktop. Partitioning allows you to store and access your data efficiently by allowing you to group files and folders in different logical drives.

Use the Partition option to create partitions in sizes best suited to your disk storage needs. The Partition option lets you use an editing menu to set the size of each partition or select a suggested partitioning scheme without having to reformat your hard disk.

## SELECTING A UNIT TO PARTITION

With the directory of a working copy of the Atari Advanced Hard Disk Utilities displaying, use the following procedure to partition your MEGAFILE:

1. Select HDX.PRG from the HDX folder. Then select the Partition option from the Disk menu.
2. Read the alert message that appears on screen. If necessary, back up all valued data on the disk before proceeding.

Select OK to continue. The Select the Physical Unit dialog box displays.

3. Select a physical unit for partitioning.

To partition your hard disk, select the unit number of the device you want to partition. Only units in shadowed boxes can be selected.

Select OK to continue.

#### 4. Select a partitioning scheme.

There are two ways to select a partitioning scheme. You can use the Choose a Partition Scheme dialog box to choose from preset partitioning schemes. Or you can use the Edit Partition Scheme dialog box to create a customized partitioning scheme. The following section fully describes each method.

### SELECTING A PARTITIONING SCHEME

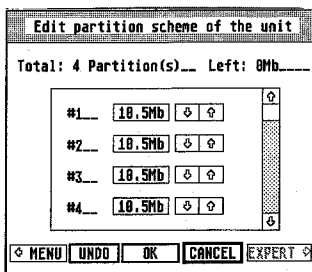
After you select a physical unit for partitioning, the Edit Partition Scheme dialog box displays.

Use the Edit Partition Scheme dialog box to create a customized partitioning scheme. If you wish to select a preset partitioning scheme, click on Menu to display the Choose a Partition Scheme dialog box.

Use the Choose a Partition Scheme dialog box to select a preset partitioning scheme. Click on Edit to return to the Edit Partition Scheme dialog box.

### Creating a Customized Partition Scheme

The Edit Partition Scheme dialog box displays information about the selected unit's current partition scheme.



### INFORMATION LINE

Information lines appear at the top of the dialog box. The Total line displays the current total number of partitions. The Left line displays the number of megabytes on your disk that have not yet been assigned to any partition.

## EDIT BOX

Each partition's size is displayed to the right of the partition number in the edit box. Minimum partition size is 1 megabyte. Maximum partition size is determined by the capacity of your hard disk. You can allocate all of the memory on your hard disk to one partition. For example, a MEGAFILE 60 hard disk can have a single partition containing all 60 megabytes of memory.

Use the scroll bar to scroll through partition boxes.

Click on the partition size box you wish to create or edit. Then click on the up and down arrows to the right of the partition size box to increase or decrease partition size. Clicking on an Unused box will create a new partition.

**Note:** There must be available bytes listed on the Left line before you can increase the size of any partition. 1 megabyte or more must appear in the Left line before an unused partition can be activated.

## PARTITION SELECTIONS

Select Menu to display the Choose a Partition Scheme dialog box. This dialog box allows you to choose preselected partitioning schemes.

Select Undo to return to the most recent partition scheme.

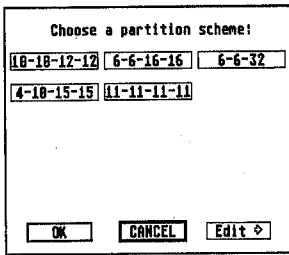
OK initiates the partitioning process.

Select Cancel to return to the HDX.PRG main menu.

The Expert option is shaded and cannot be selected unless you have more than four partitions. If you plan to use only one operating system, you do not have to use the Expert option. If you are planning to use more than one operating system with the same hard disk, see **Extended Partition Schemes** in this section.

## Selecting a Preset Partition Scheme

The Choose a Partition Scheme dialog box appears when you select Menu from the Edit Partition Scheme dialog box.



The Choose a Partition Scheme menu provides a list of suggested partitioning schemes. Select the scheme you want from the list. Select Edit to return to the Edit Partition Scheme box.

After you select a partitioning scheme, select OK to partition the disk.

## Extended Partition Schemes

There are four slots on your hard disk that keep track of partition information. You can fill each slot with a standard partition, and have each partition represented on your desktop by a logical drive. Or you can fill one of the four slots with an extended partition to obtain more than four logical drives.

An extended partition is subdivided into more than one partition. This allows you to have more than one logical drive representing that slot.

**Note:** To store system startup data the first partition must be a standard partition. This partition is always assigned to the first slot. You cannot select the first slot to contain the extended partition. You must use one of the three remaining slots to contain your extended partition.

If you plan to use TOS as your only operating system, HDX.PRGM will handle the slot assignments automatically. However, if you plan to use more than one operating system, it may be useful to choose the specifics of the partition assignments. Some operating systems will not recognize an extended partition scheme. The partitions you use with these operating systems must be standard partitions.

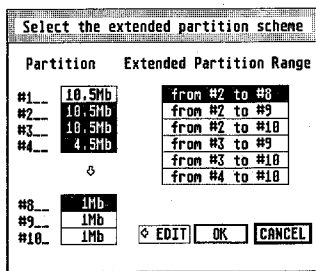
The Expert option of the Edit Partition Scheme dialog box allows you to choose which slot will contain the extended partition, and which slots will contain standard partitions. You can use up to four slots.

If you are using more than one operating system, select the third or fourth slot to contain the extended partition. That leaves the second sector slot in normal mode, able to be read by other operating systems.

The Select the Extended Partition Scheme dialog box displays the current extended partition scheme. The Partition box on the left side of the dialog box shows the partition number, size, and range of each partition. The Extended Partition Range box on the right side of the dialog box allows you to choose which slot will contain the extended partition scheme.

The Extended Partition Range box displays each slot's range of partitions.

In the example below, all four slots contain partition information. The first slot contains partition one. The second slot contains the extended partition, which is subdivided as partitions two through eight. Note that the partitions included in the extended partition are highlighted. The third slot includes partition nine, and the fourth slot contains partition ten. Slots one, three and four contain standard partitions.





Copyright © 1989, Atari Corporation, Sunnyvale, CA 94086. All rights reserved.

Printed in Taiwan

C300862-001 Rev. A

1989 5 CHENG SHEN